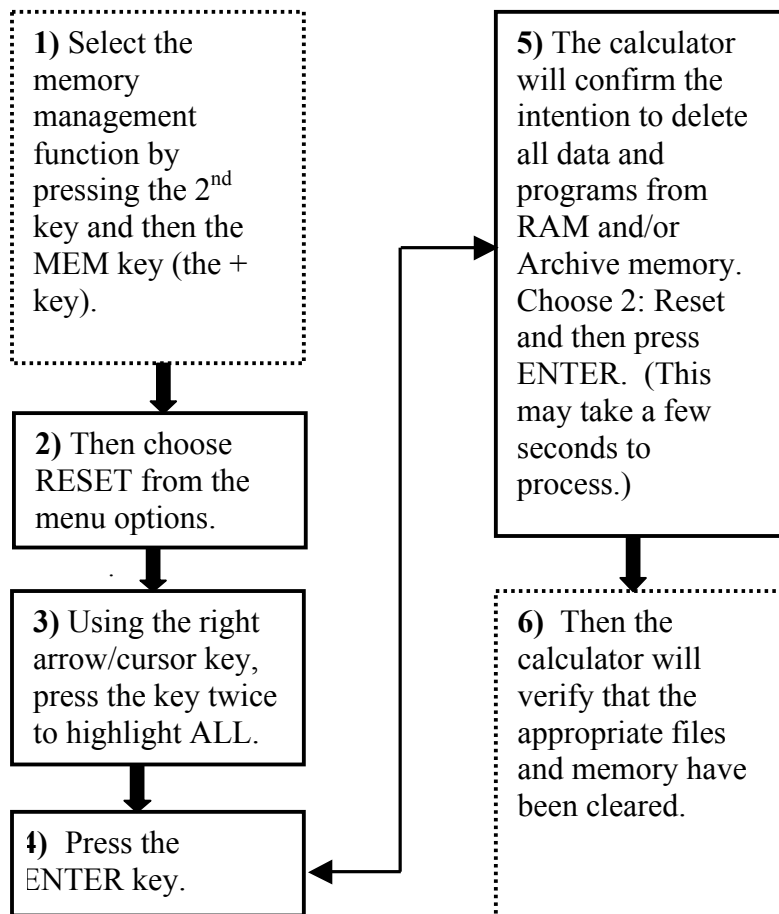


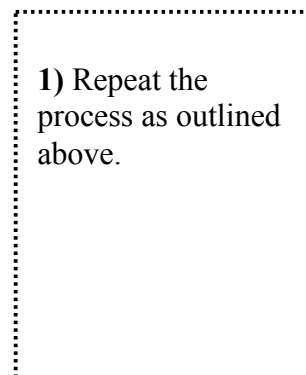
## Method for Clearing Memory: Memory Management to Reset Calculator Models: TI-81, TI-82, TI-83, TI-85, TI-73 and TI-86 Plus

Overview: All students must have access to calculators that meet the minimum requirements during the administration of North Carolina tests, when applicable. Prior to beginning and immediately following a test administration that requires calculator use, only the test administrator or principal's designee is required to clear the calculator memory and applications of all calculators to be used during the administration of the test. The memory management function of the selected Texas Instruments graphing calculators will permanently delete all data, programs, and list from both the RAM and/or Archive memories of the designated calculator.

### PRIOR TO TESTING



### AFTER EACH ADMINISTRATION



## AT THE CONCLUSION OF ALL TESTING

NOTE: To restore files that were on the calculator prior to the reset, transfer files from one calculator to another via the “Link-to-Unit transfer” function, if applicable. For instructions to reset a specific model calculator, please contact 1-800-TI-CARES.

